

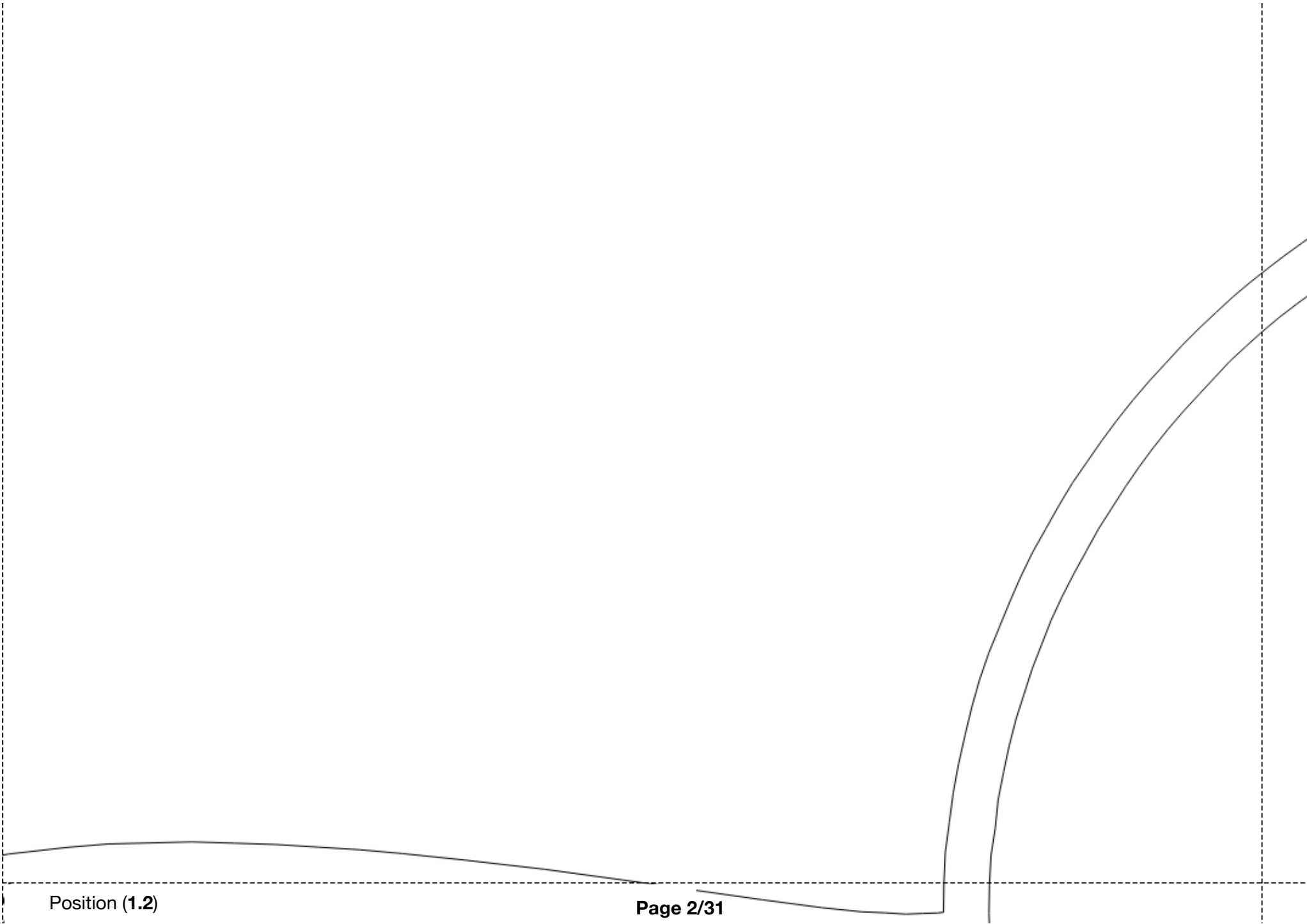


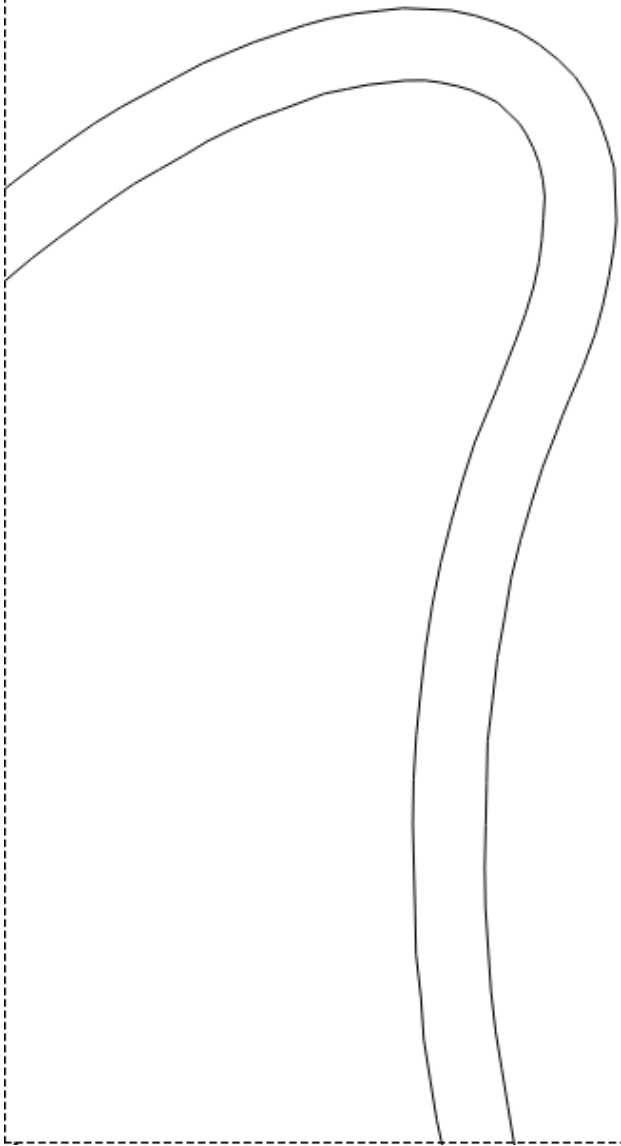
Patron de la Gigoteuse / Turbulette

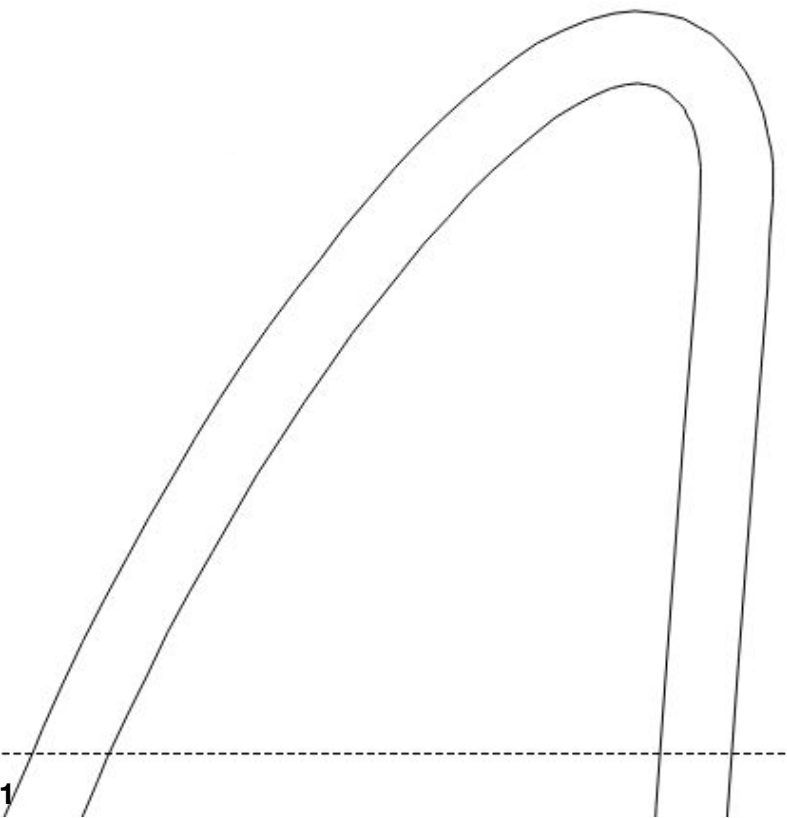
Super Requin

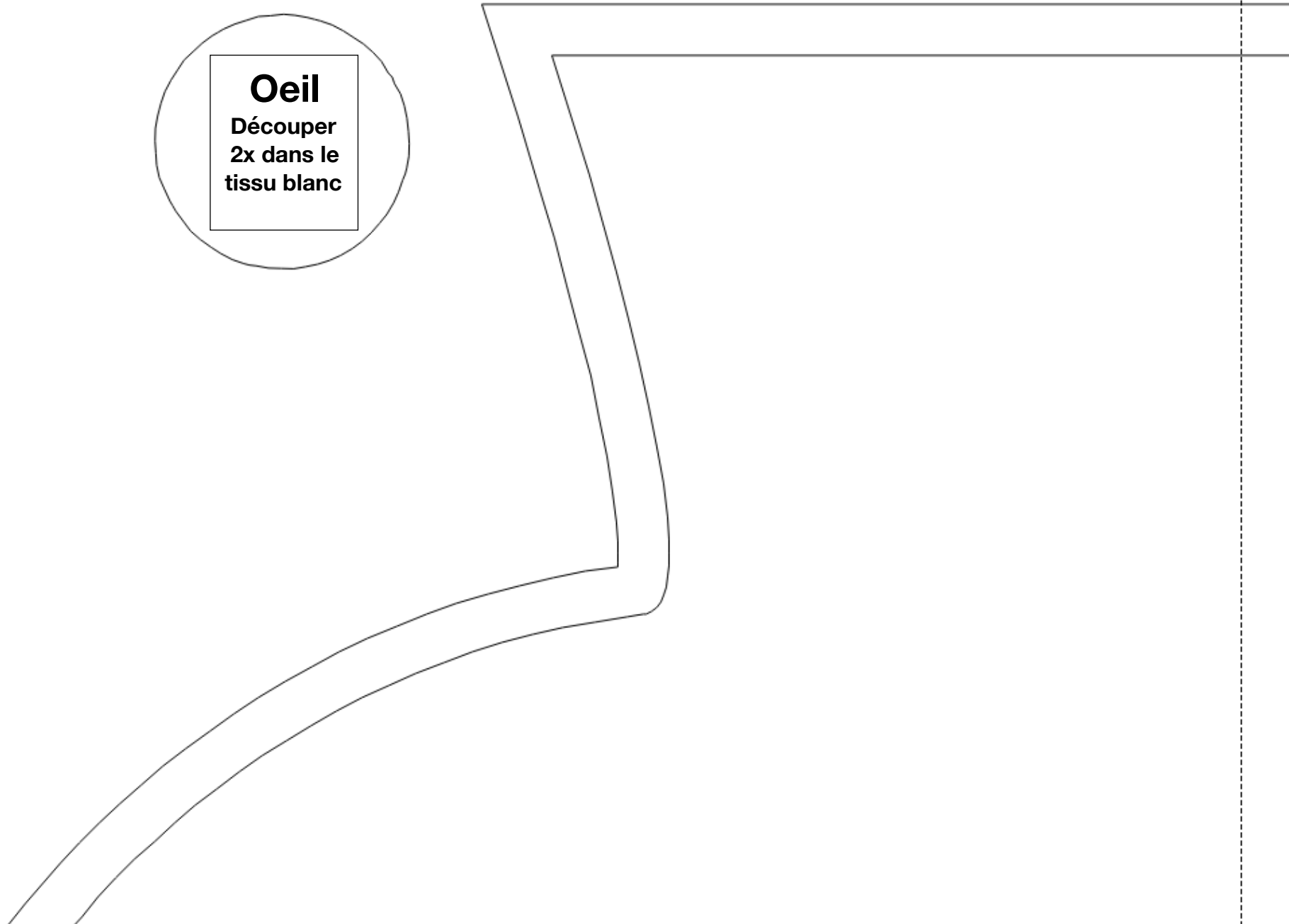
(de 12 à 24 mois)

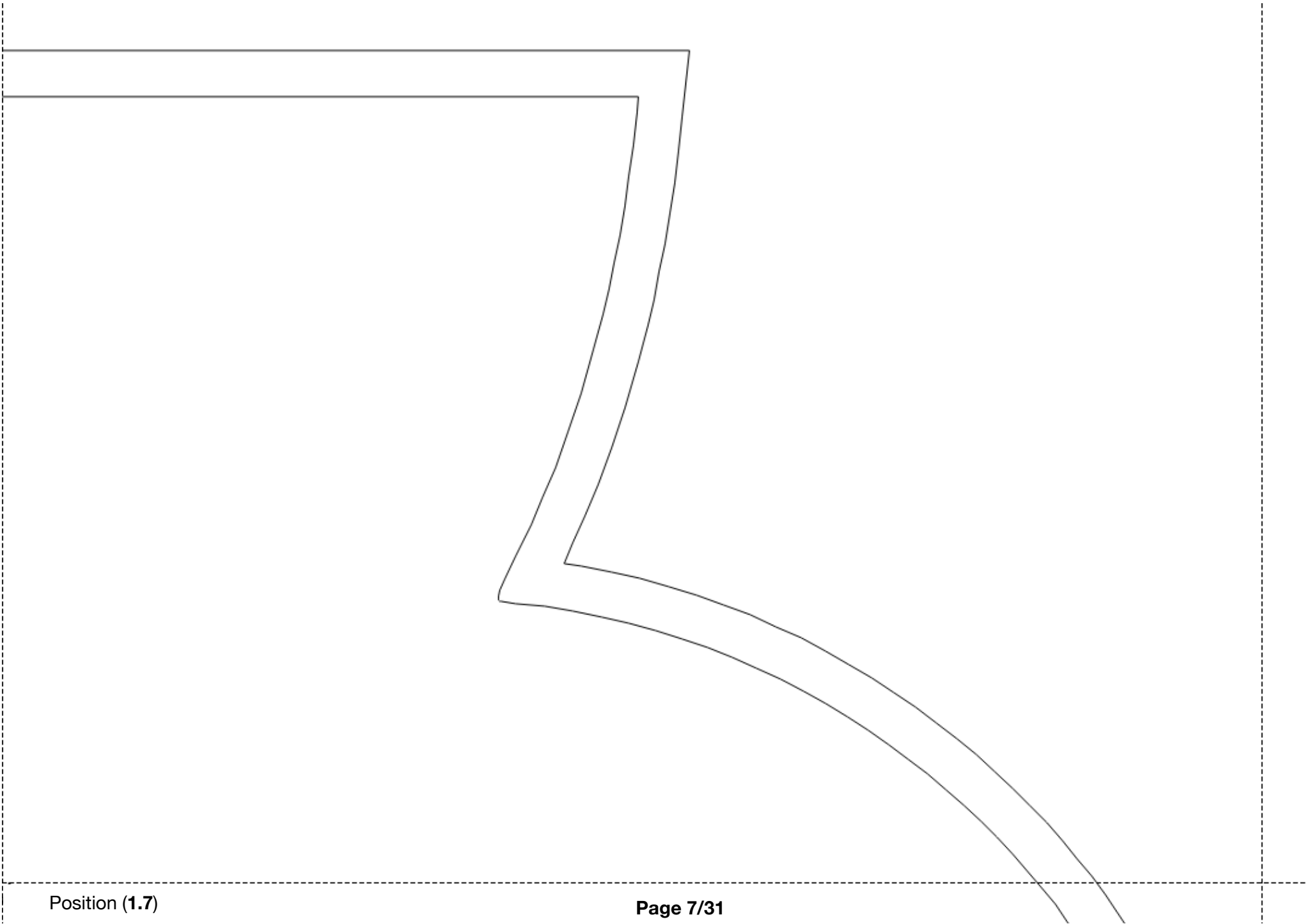
	Col.1	Col.2	Col.3	Col.4	Col.5	Col.6	Col.7
Rang 1							
Rang 2							
Rang 3							
Rang 4							
Rang 5							



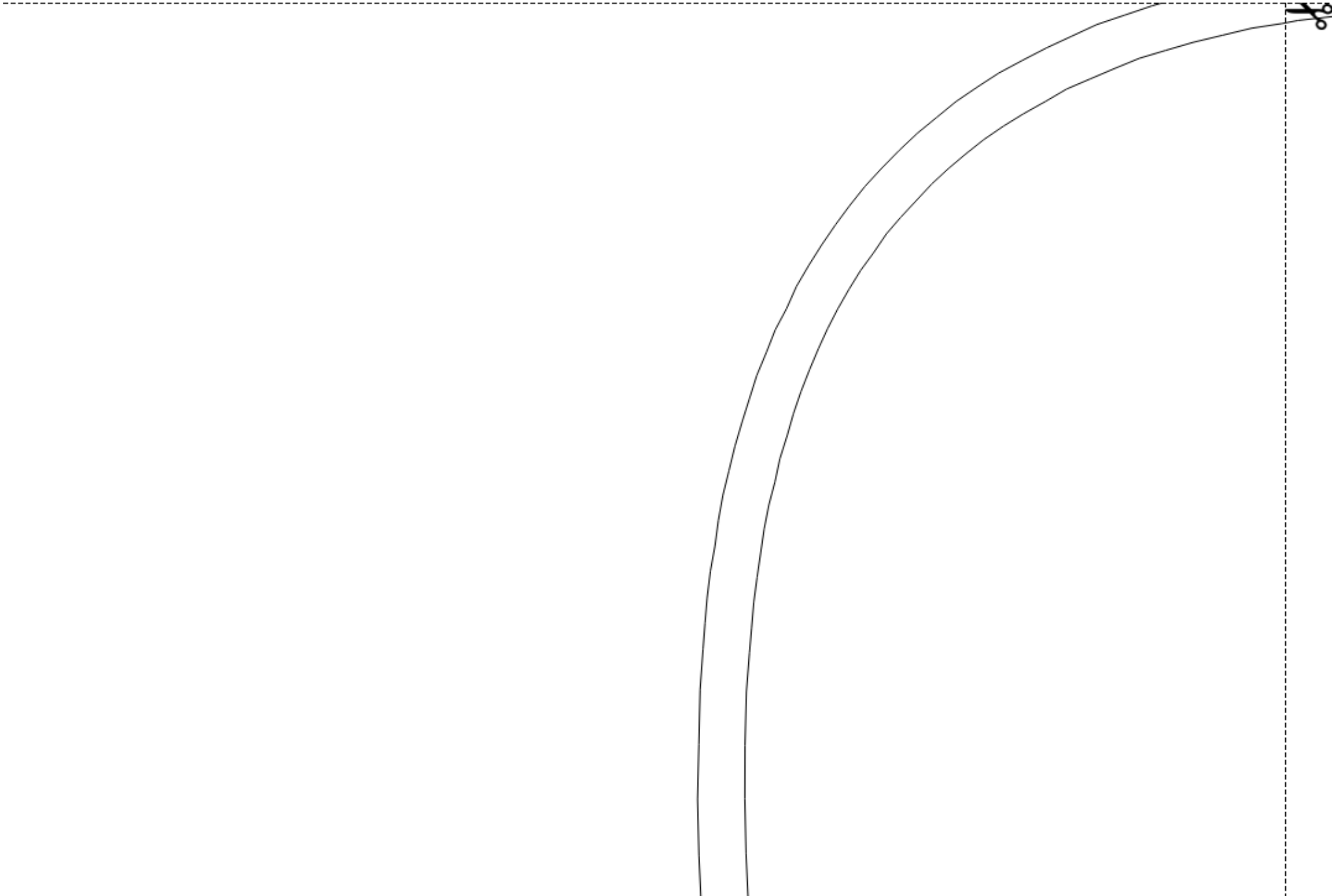






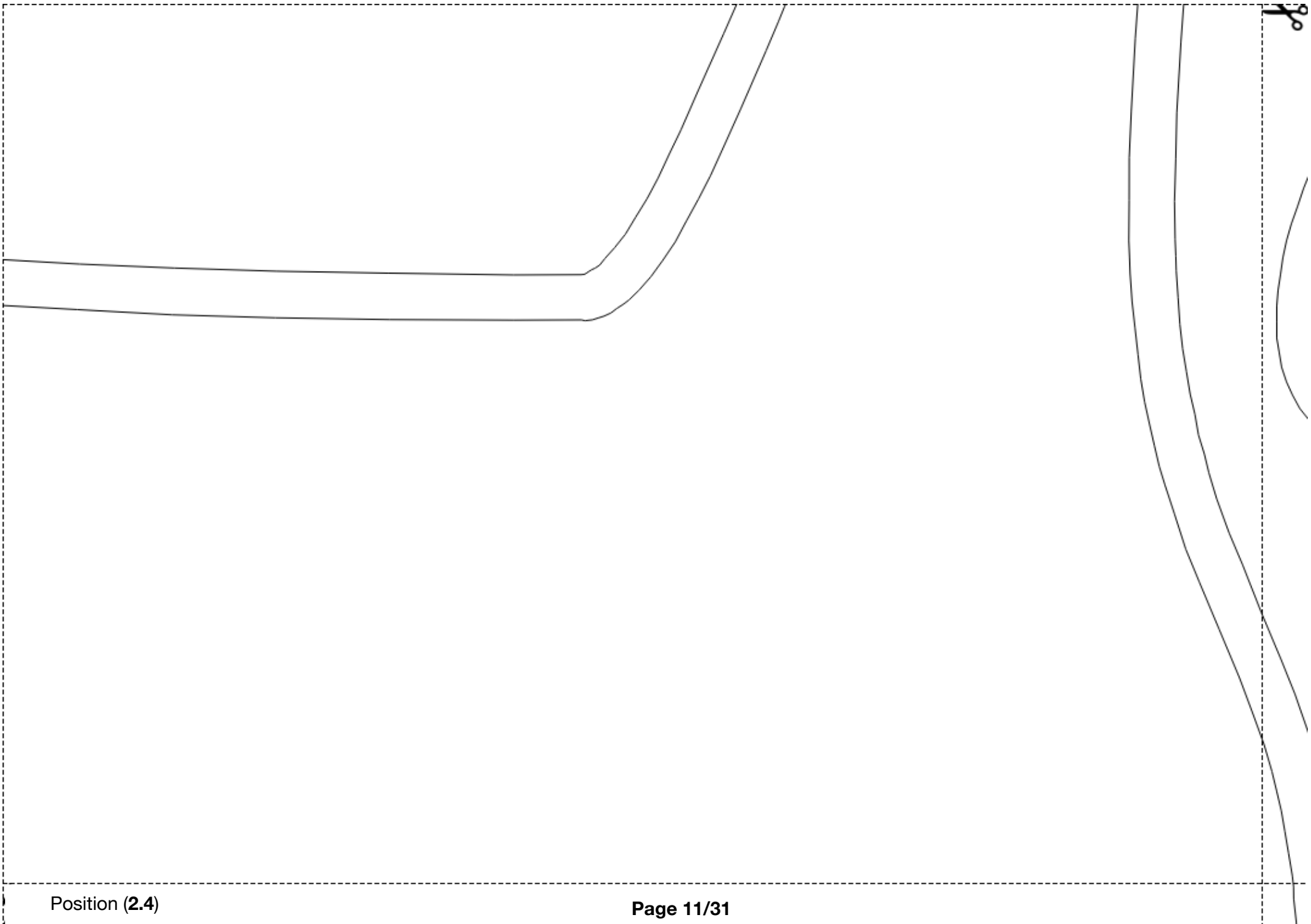


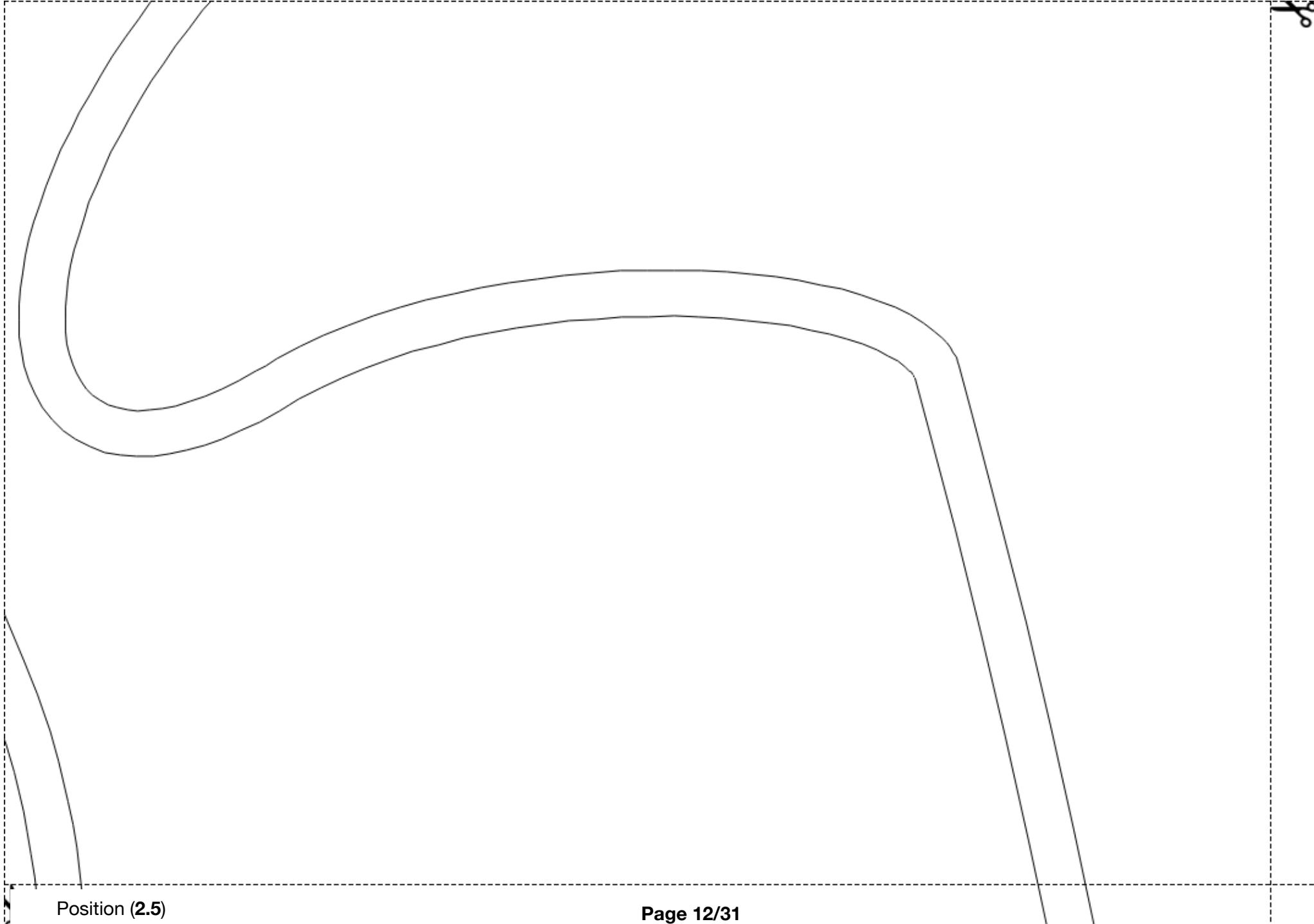
Position (1.7)












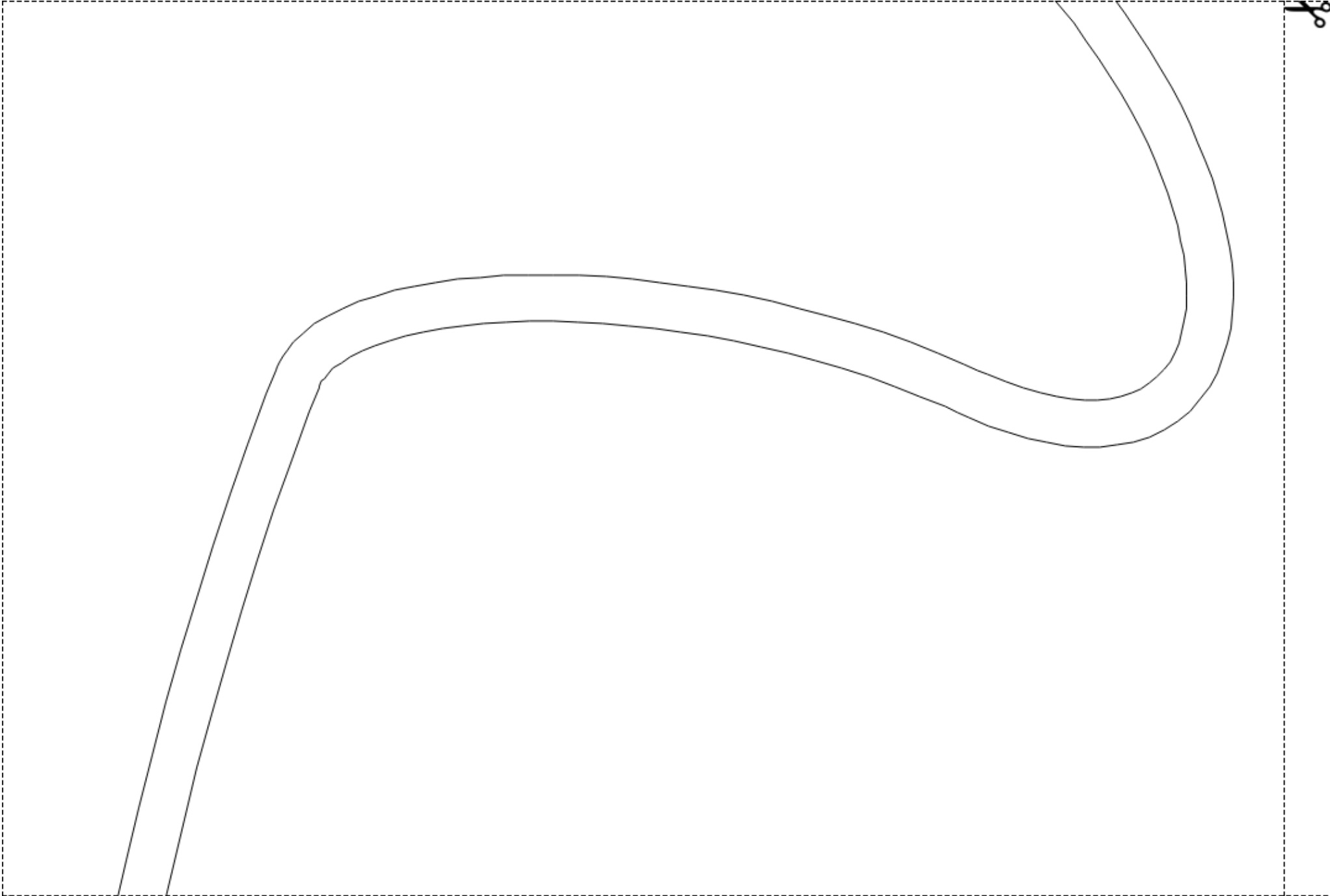


Devant

**Découper 1x dans le tissu extérieur
1x sur l'envers du tissu de doublure
1x dans le molleton**

Droit Fil





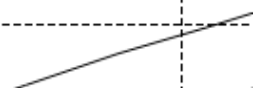


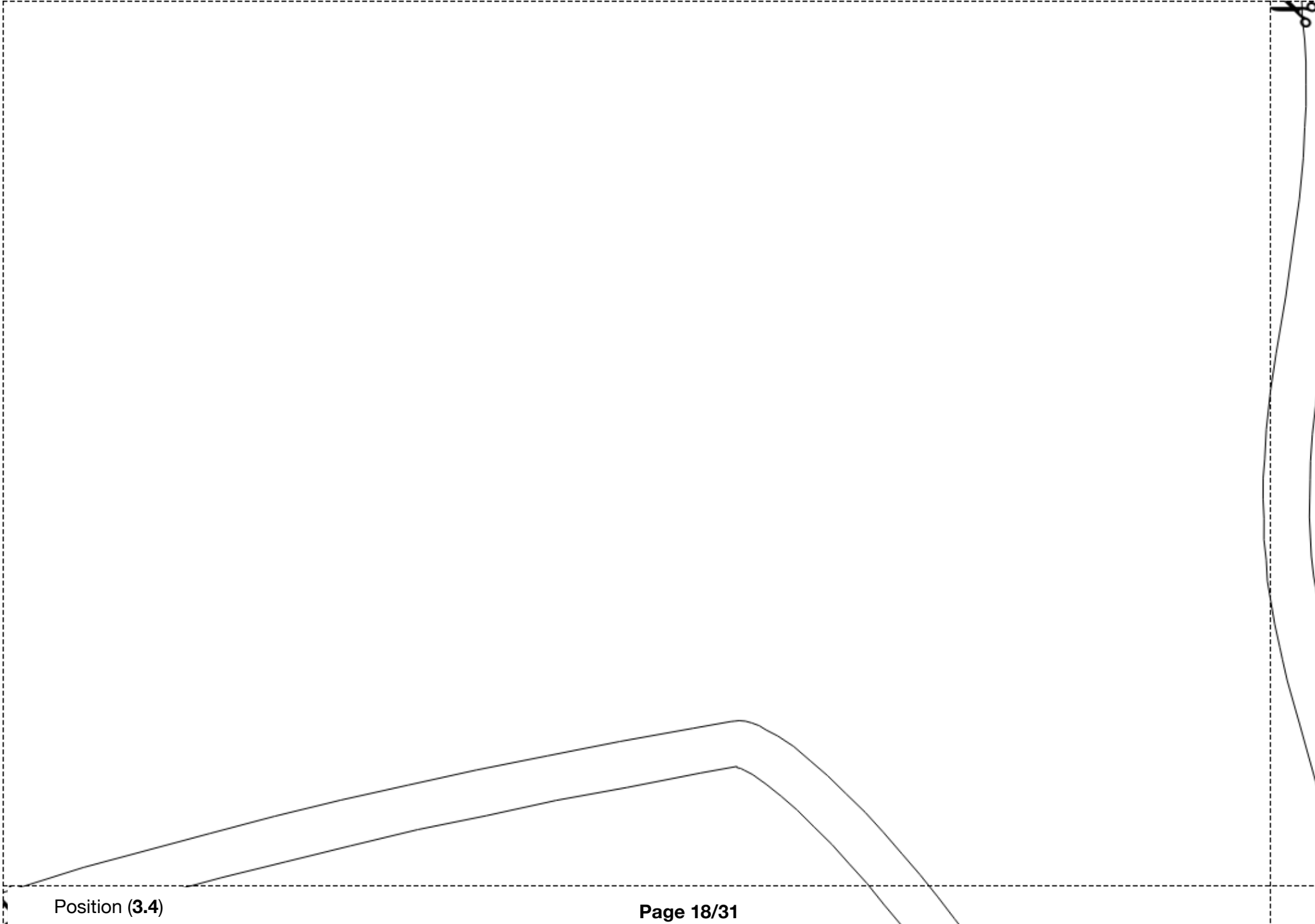




Dos

Découper 1x dans le tissu extérieur
1x sur l'envers du tissu de doublure
1x dans le molleton

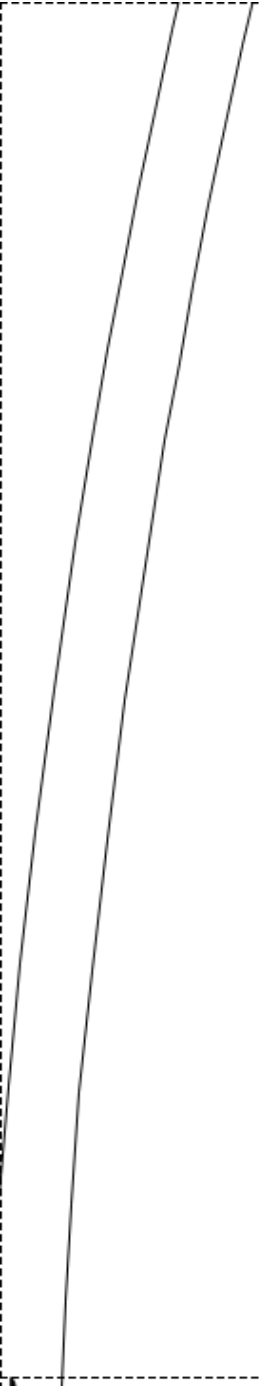
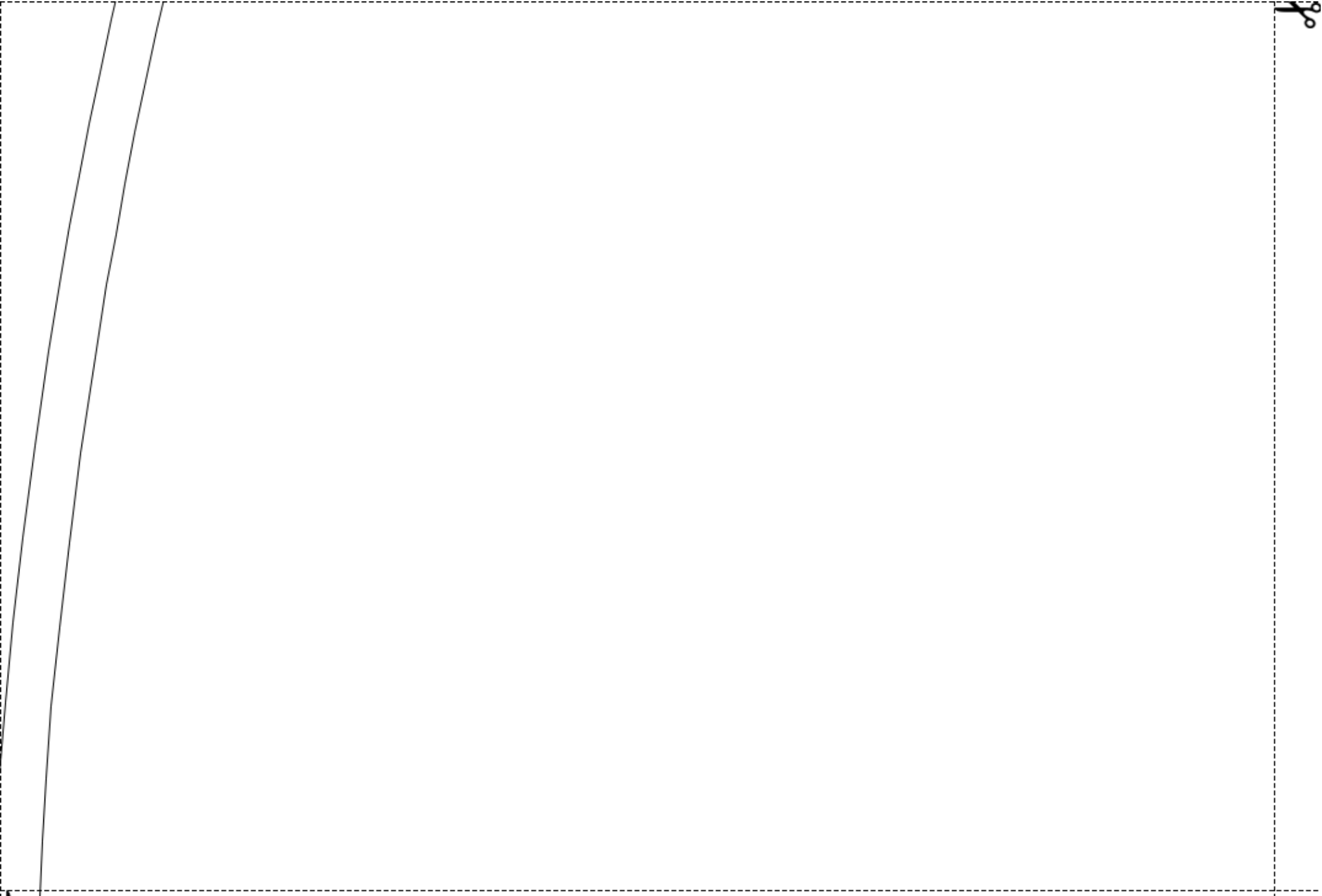


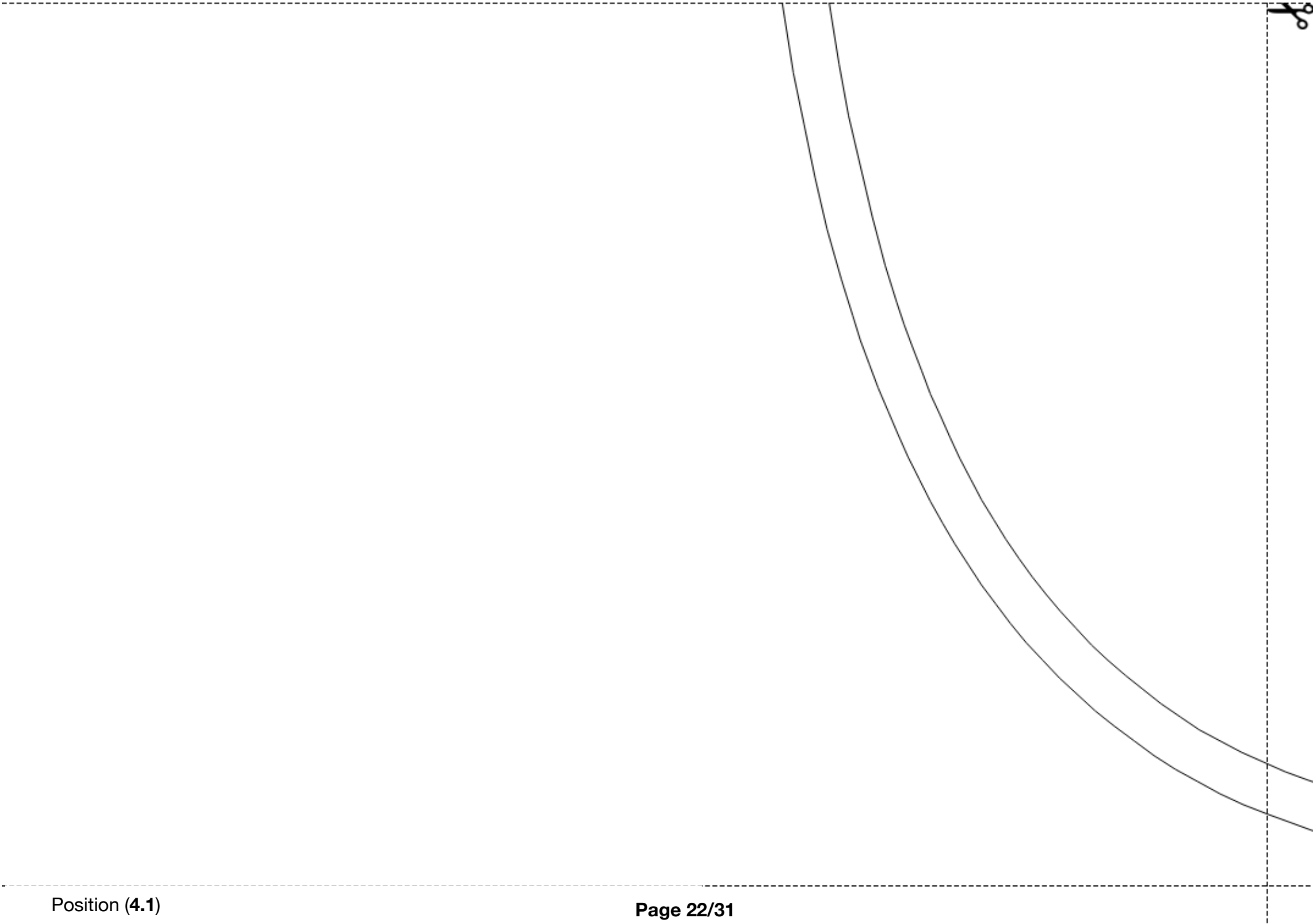


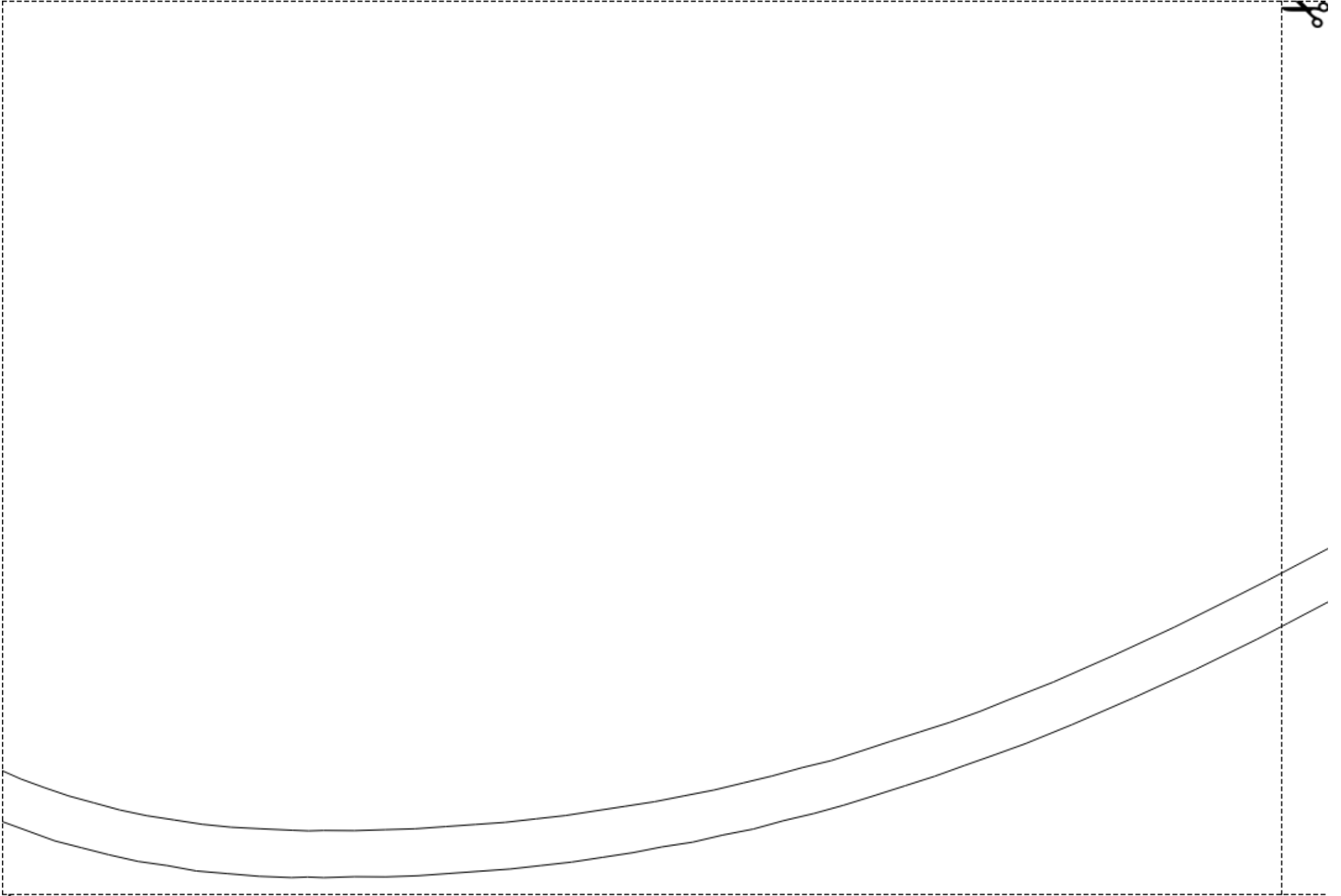
Position (3.4)

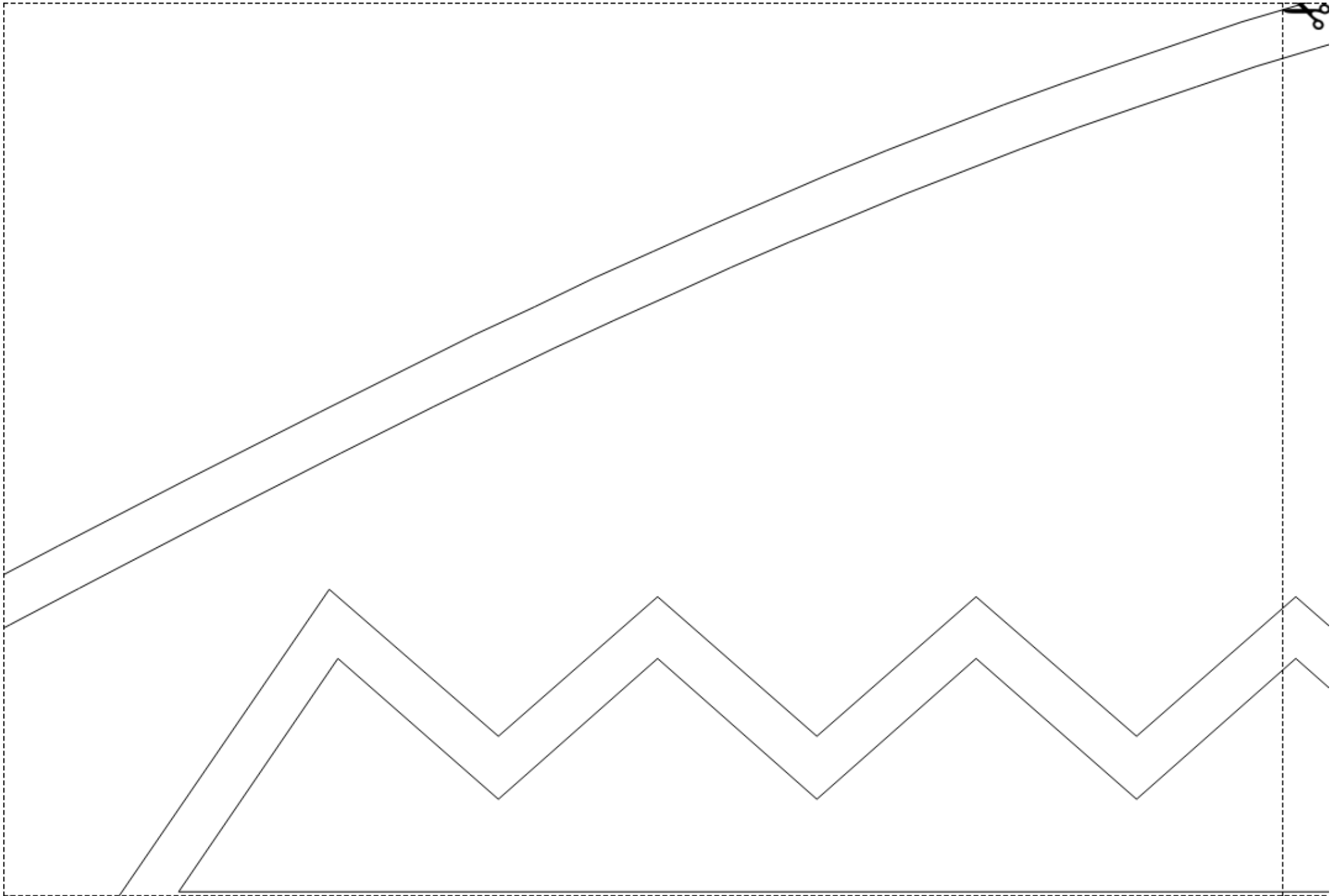




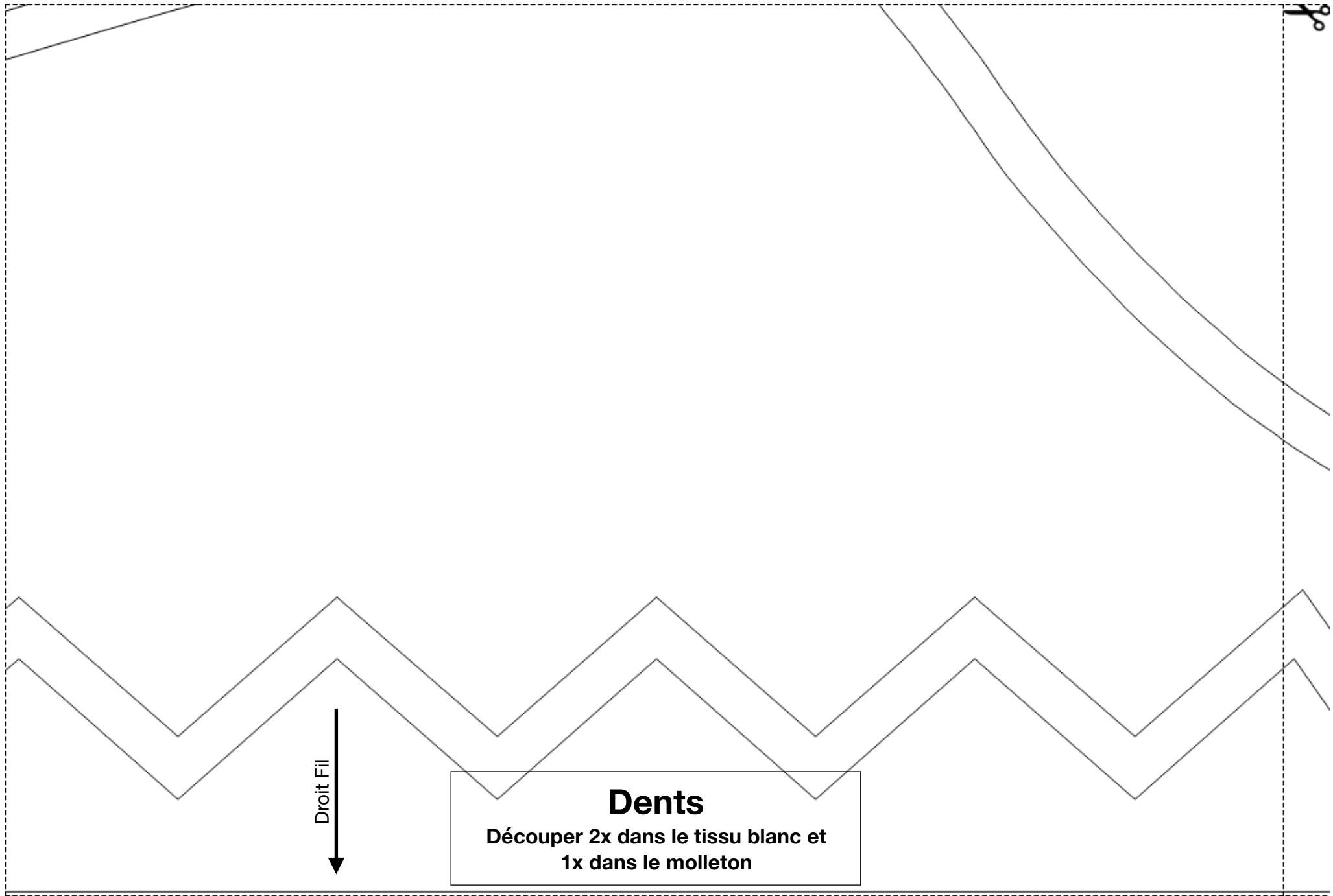






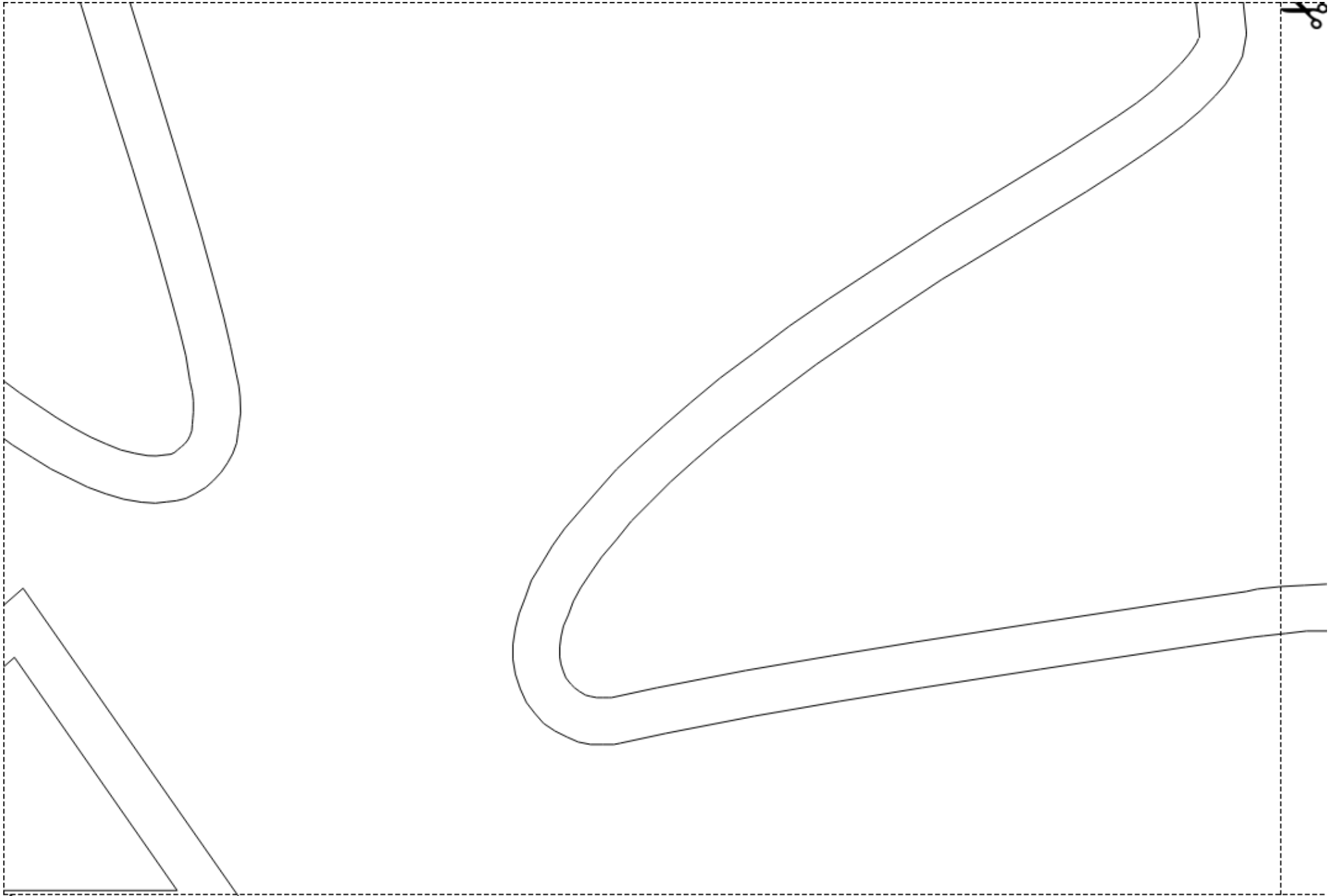


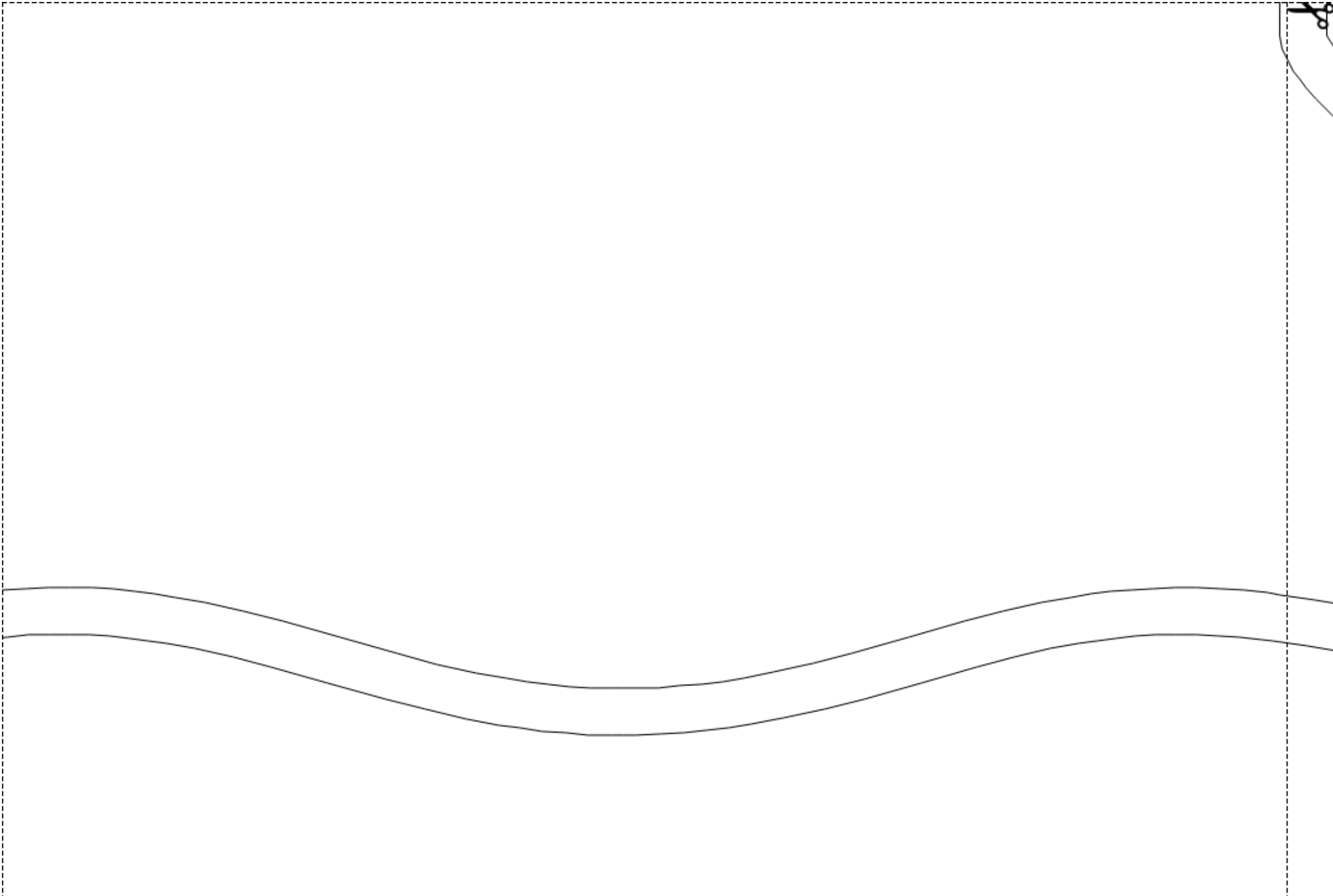
Position (4.3)

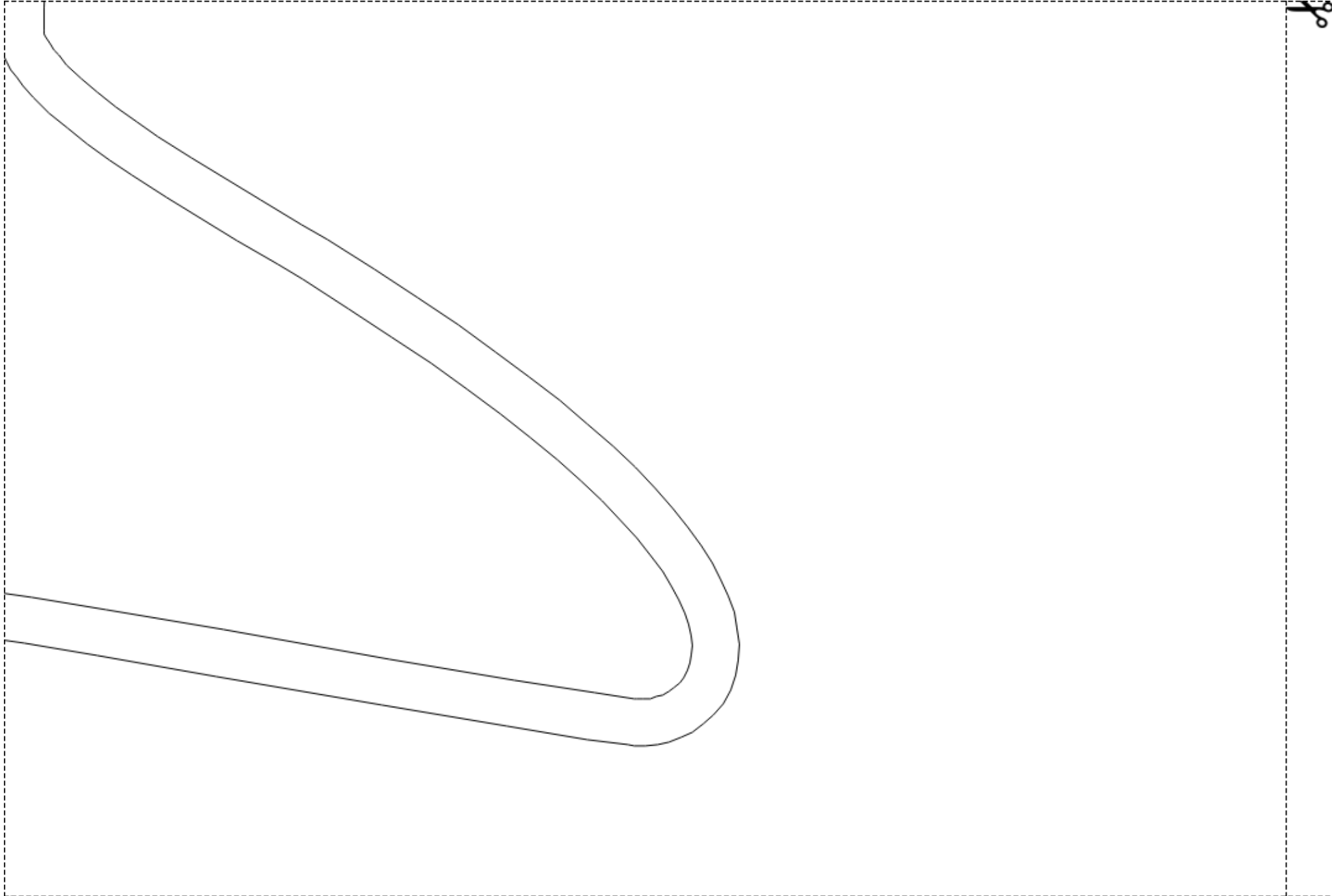


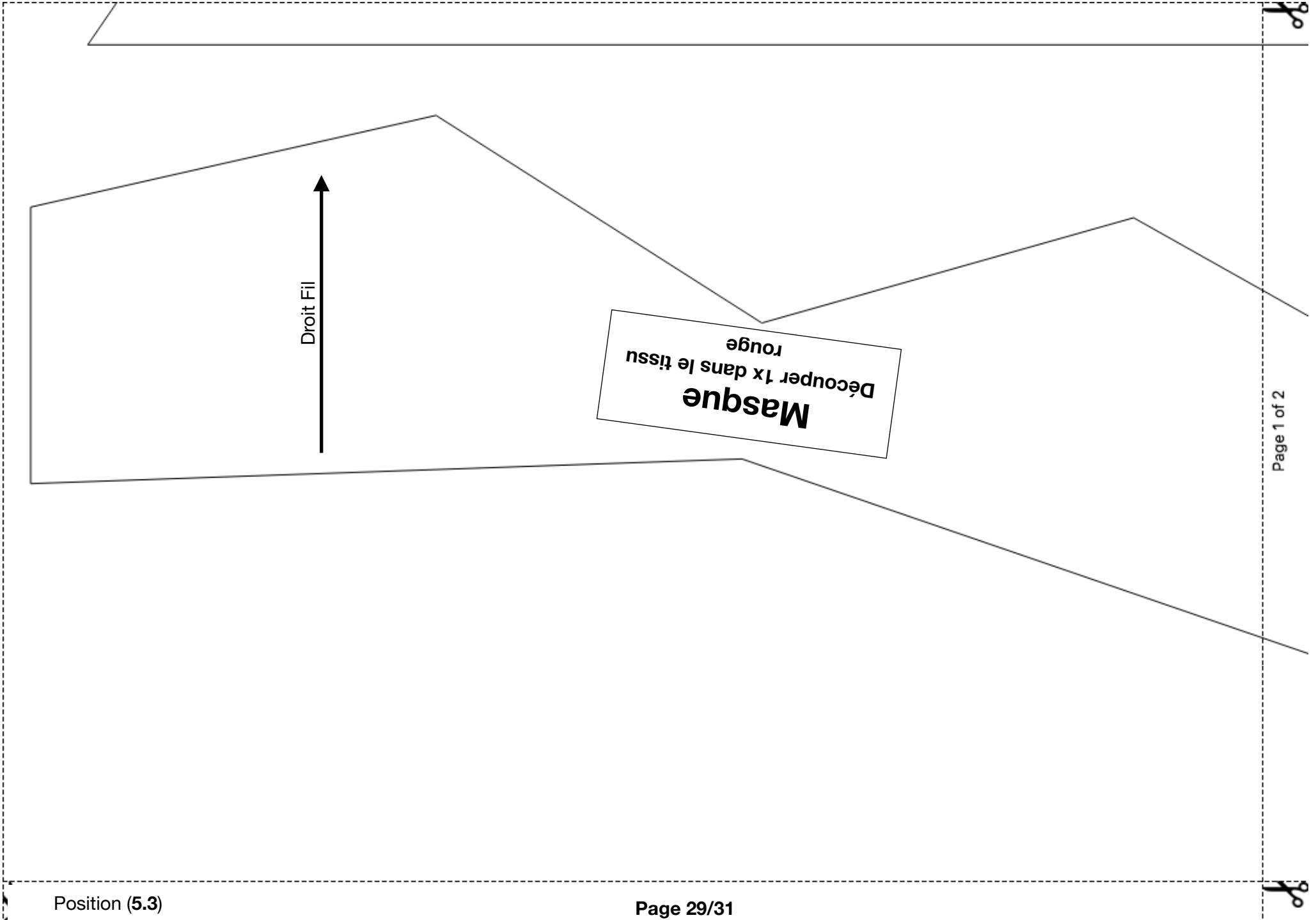
Droit Fil
↓

Dents
Découper 2x dans le tissu blanc et
1x dans le molleton



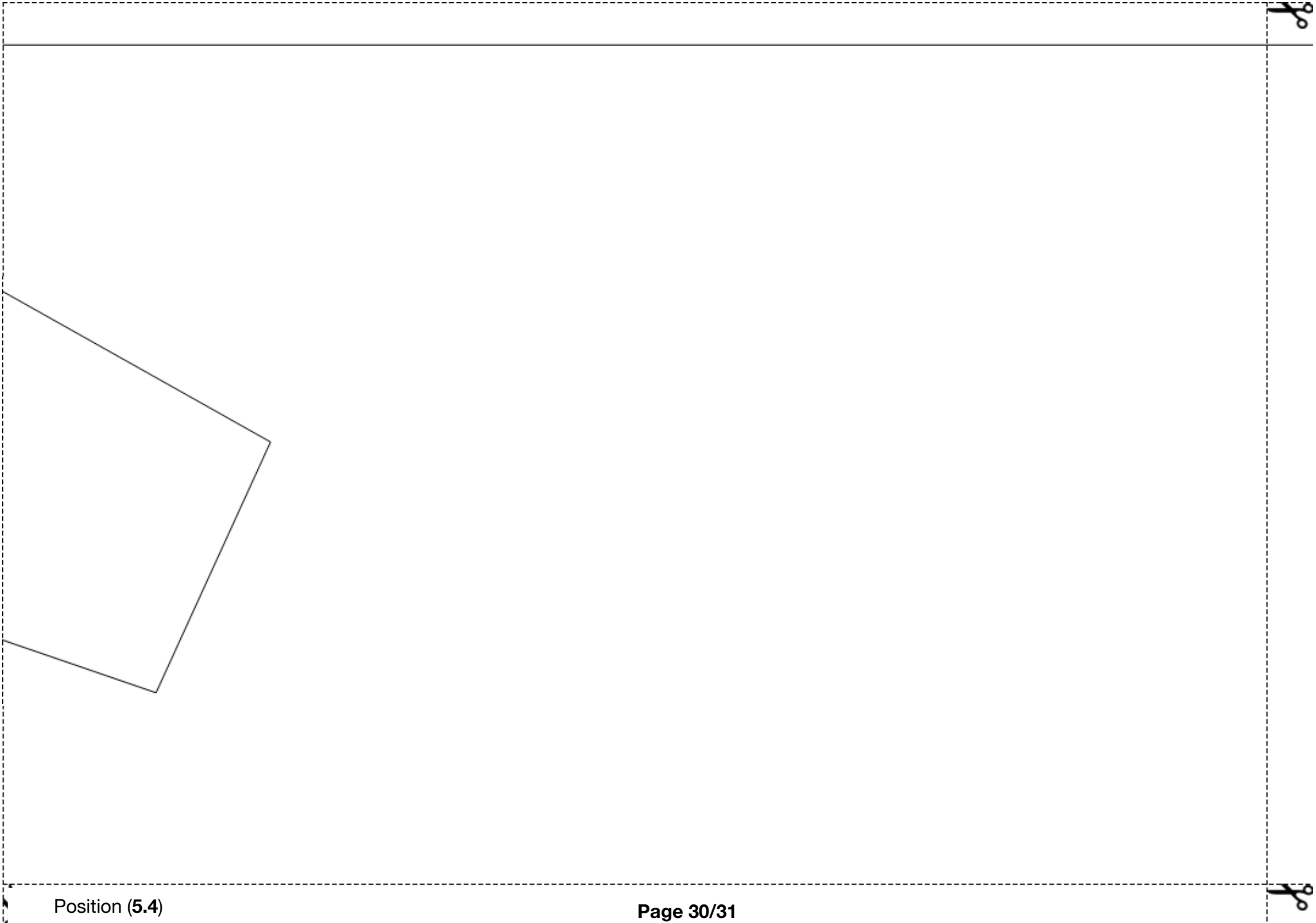




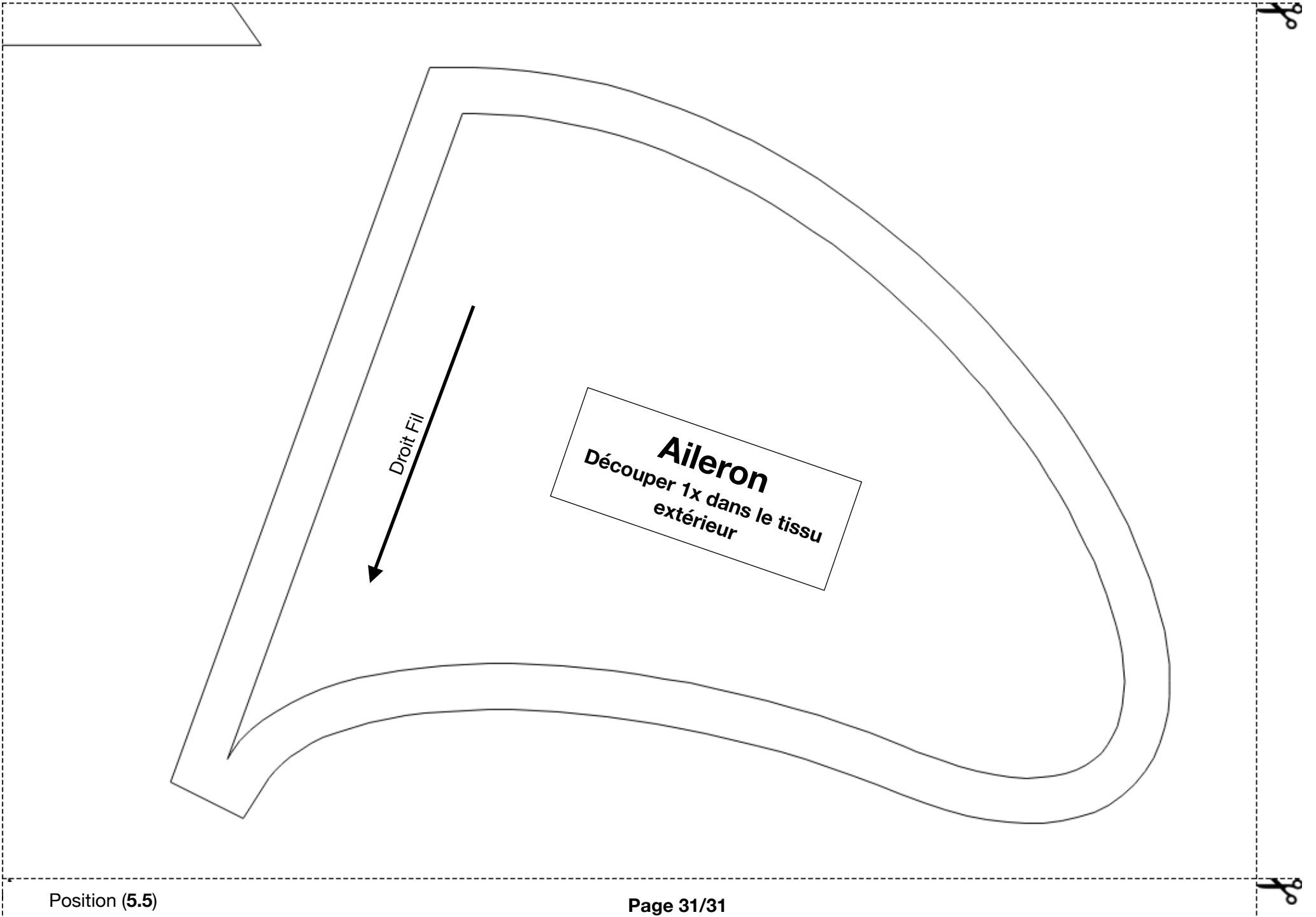


Droit Fil

Masque
Découper 1x dans le tissu rouge



Position (5.4)



Droit Fil

Aileron
Découper 1x dans le tissu
extérieur