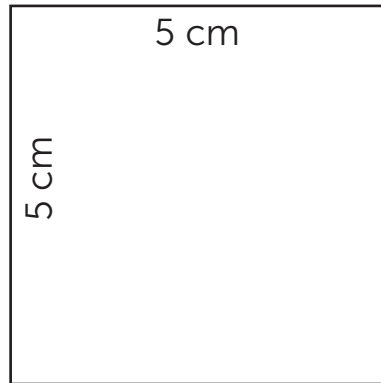




COUSSIN D'ALLAITEMENT

Instructions de montage : www.coutureenfant.fr/coussin-allaitement/

Vérifiez que vous avez la bonne échelle :
mesurez le carré, vous devez trouver ces mesures.



Les marges de couture de 1 cm sont incluses.

DISPOSITION DES PLANCHES

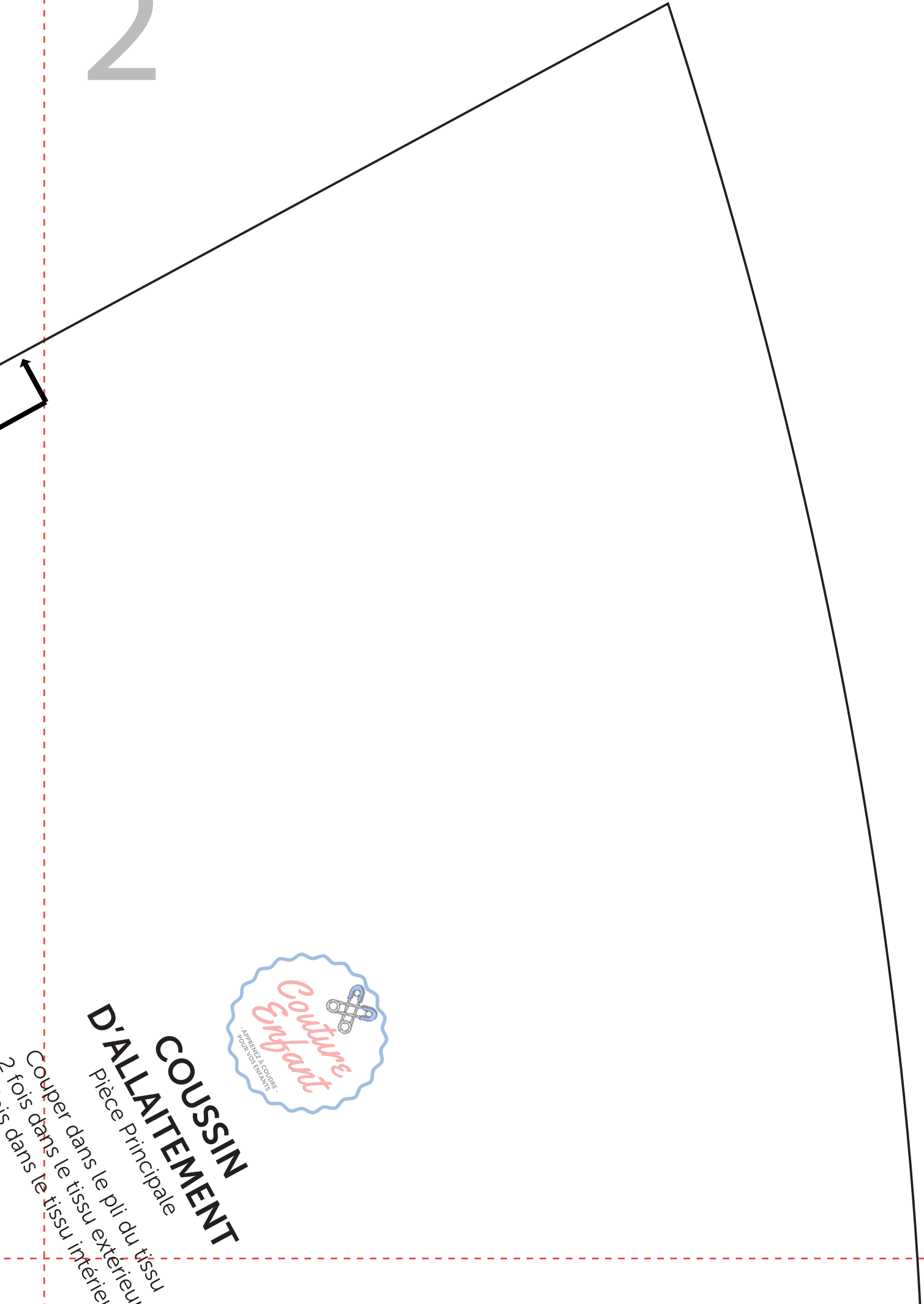
| | |
|---|---|
| 1 | 2 |
| 3 | 4 |
| 5 | 6 |

1

PLIURE

- Couper dans
- 2 fois dans le tissu
- 2 fois dans le tissu inter.

2

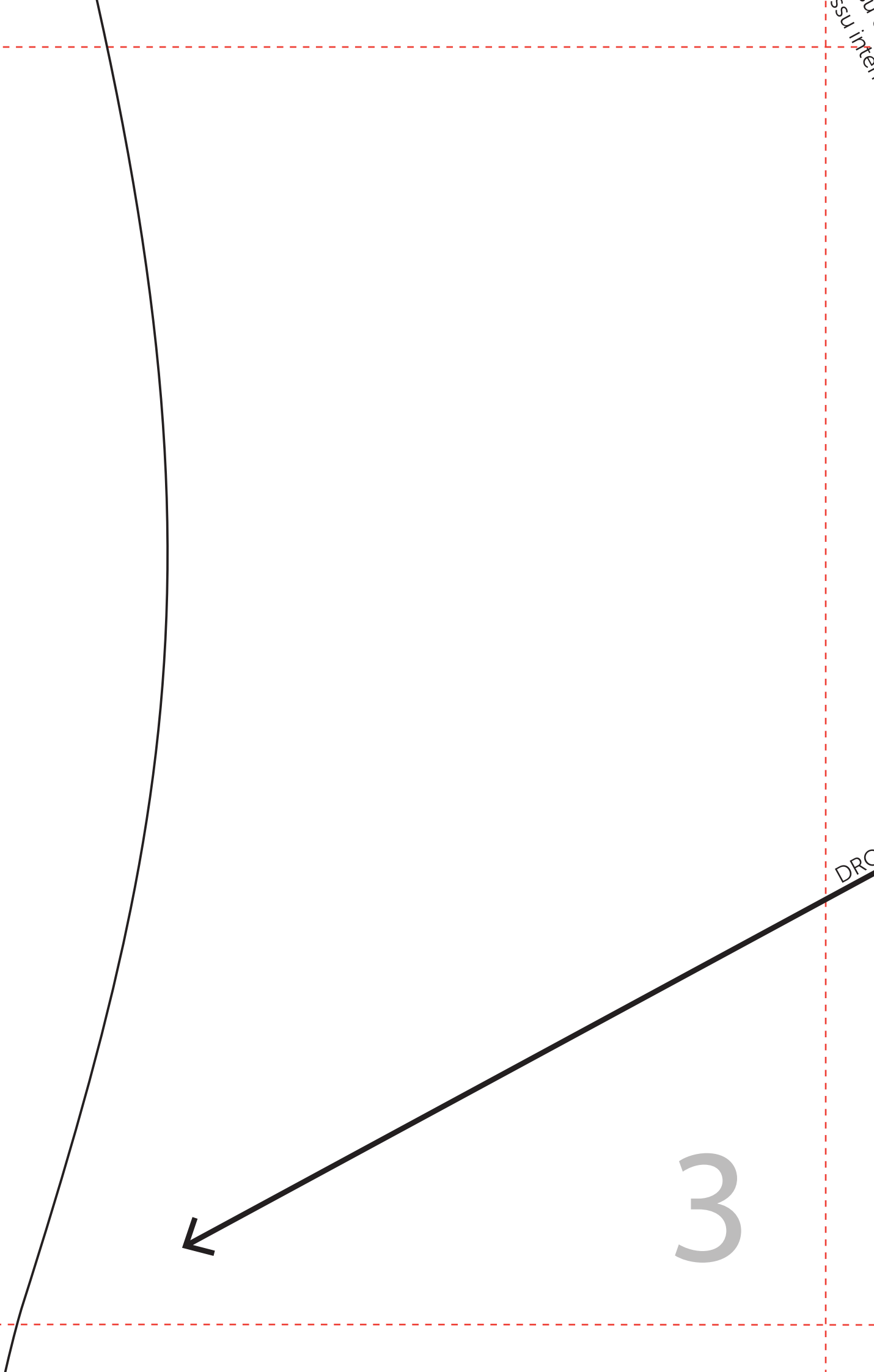


COUSSIN D'ALLAITEMENT

Pièce Principale

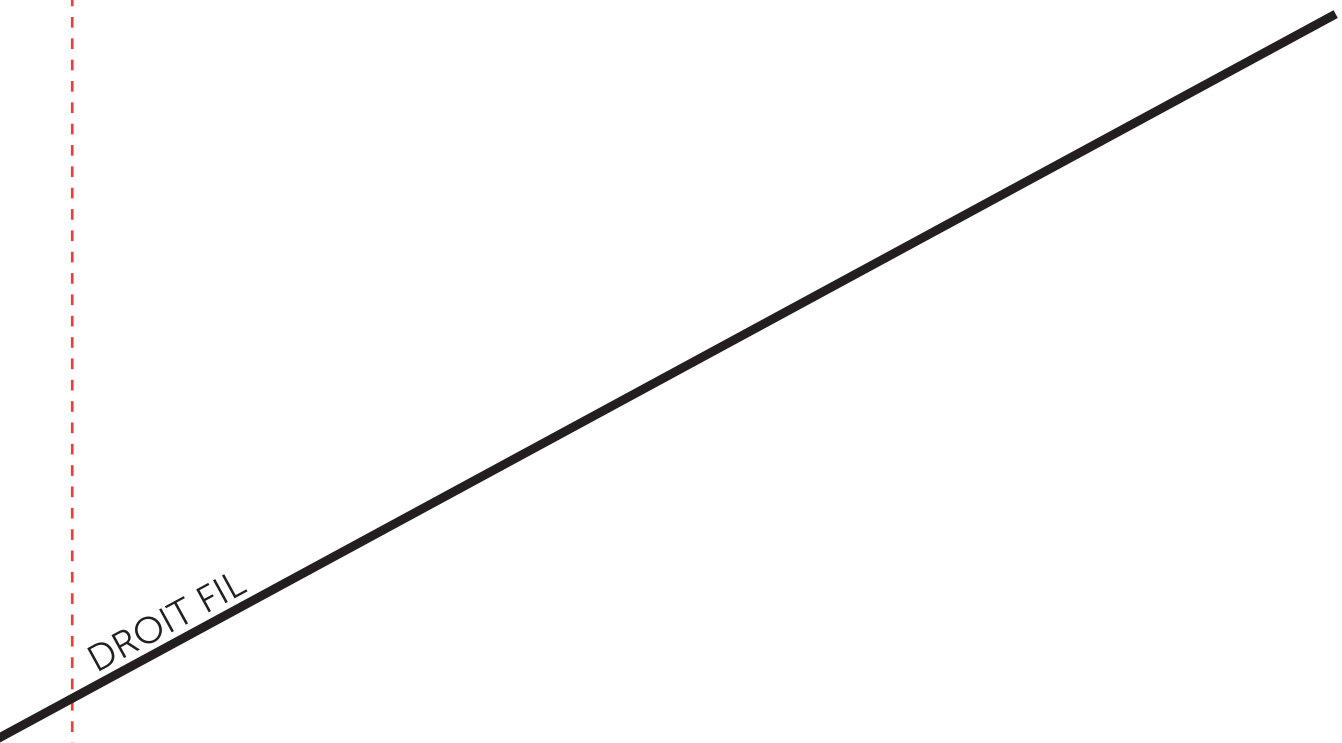
Couper dans le pli du tissu
2 fois dans le tissu extérieur
1 fois dans le tissu intérieur

3



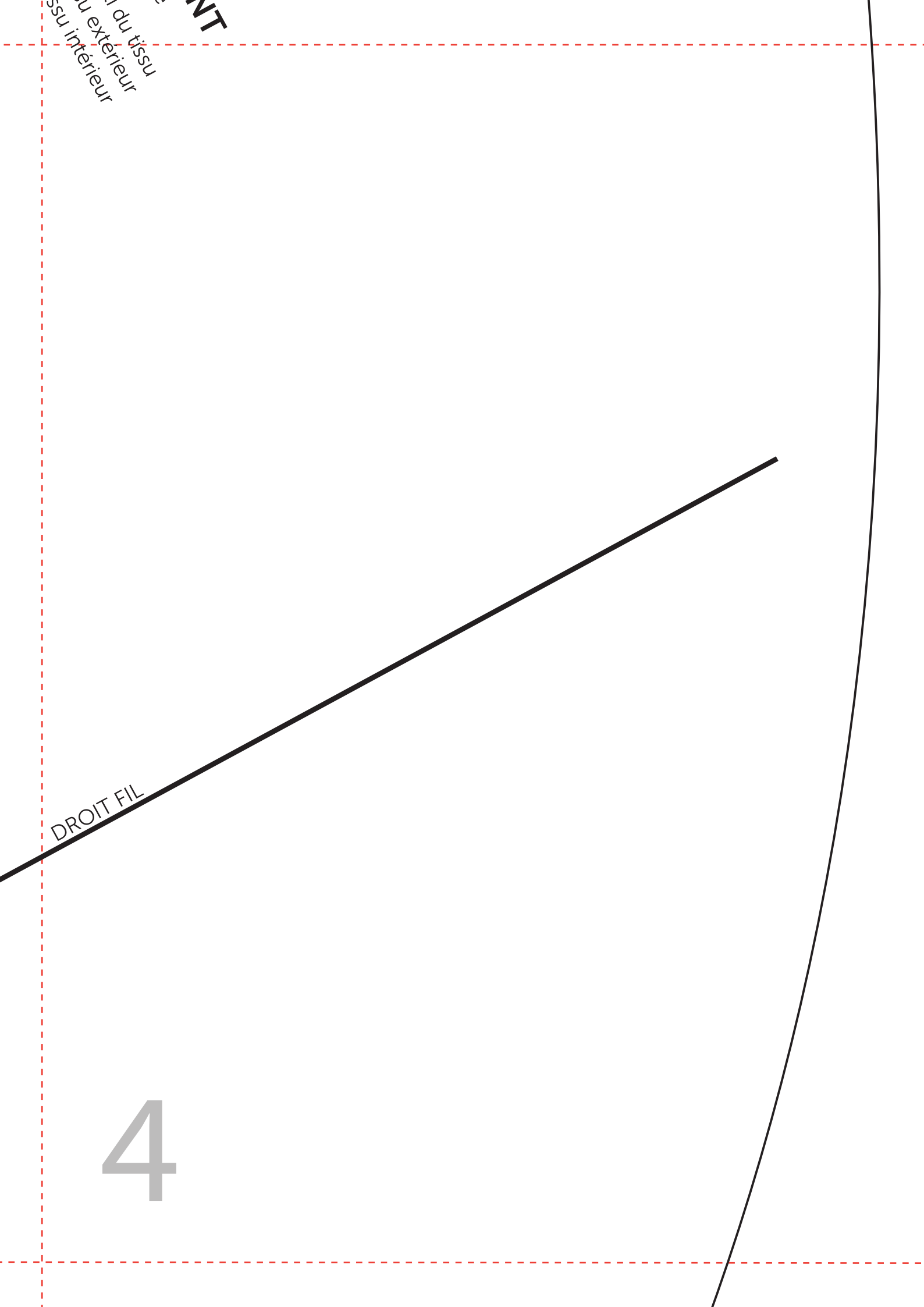
... du tissu
... extérieur
... intérieur

... NT



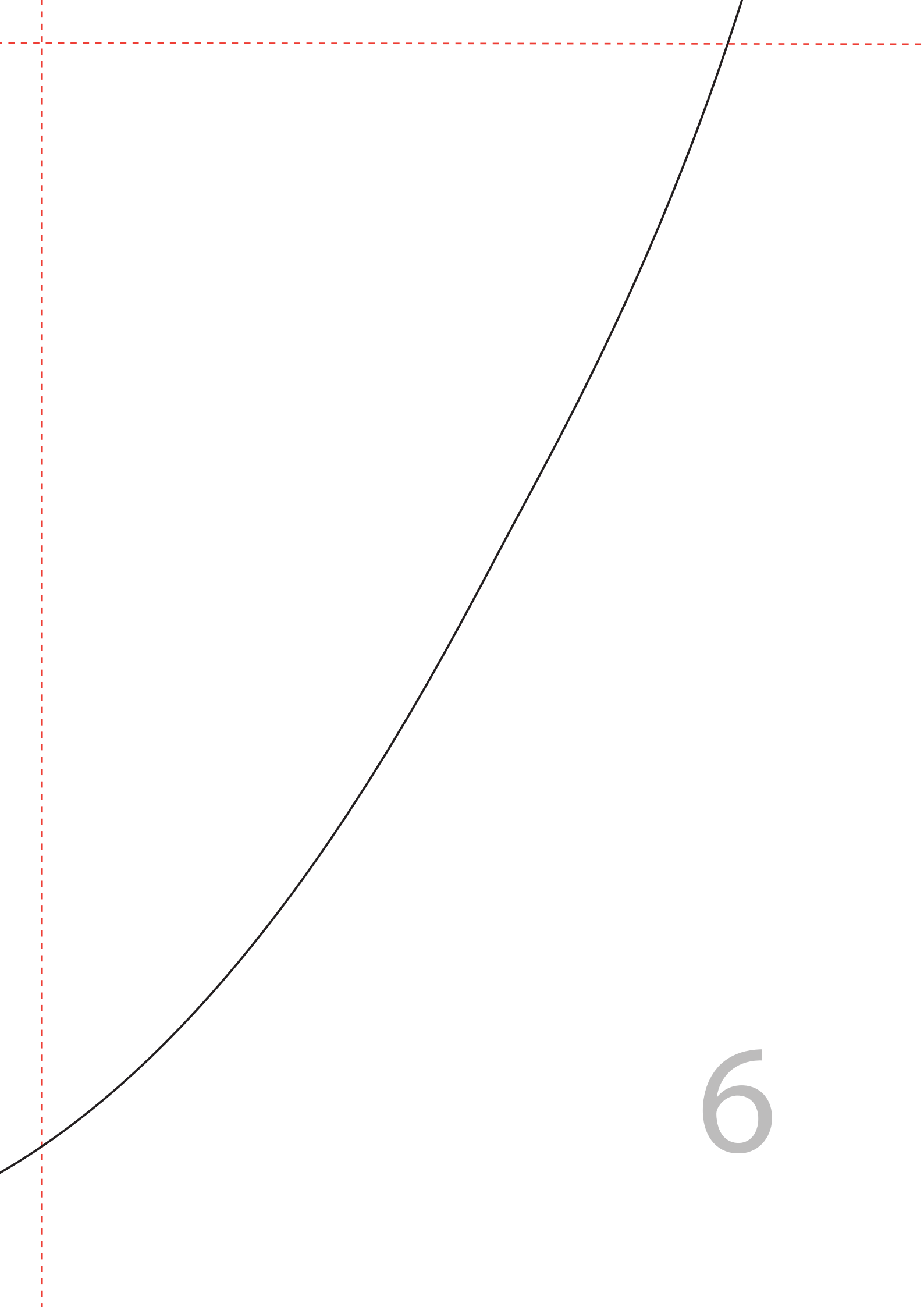
DROIT FIL

4



A large, light gray number '5' is positioned in the lower-left quadrant of the page. A dashed red rectangle is drawn around the top and right sides of the page, with its top edge aligned with the top of the page and its right edge aligned with the right edge of the page. A solid black arc, resembling a large 'C' or a partial circle, starts at the top left and curves downwards and to the right, ending near the bottom right. The number '5' is located to the left of the arc's lower portion.

5



6